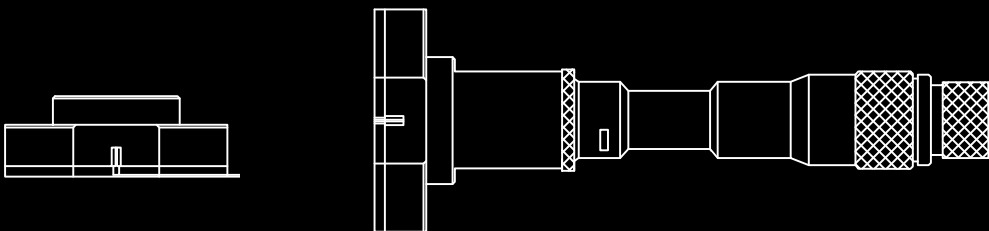


Innenfeinmessgeräte

Bore Gauges

- 60 3-Punkt-Innenmessschrauben / Three Point Internal Micrometers
- 61 Innenmessschraube / Inside Micrometers
- 62 Innenfeinmessgeräte / Dial Bore Gauges
- 63 Zubehör / Accessories
 - Einstellgerät für Innenmessgeräte / Bore Gauge Zero Checker
- 64 Innenmessschrauben in zusammensetzbarer Ausführung / Tubular Inside Micrometers



3-Punkt-Innenmessschrauben Three Point Internal Micrometers

209 Series



AUSFÜHRUNG

- Ablesung: 0.001mm bis 10 mm; 0.005 mm ab 10 mm
- Geeignet für Sacklochbohrungen
- Hartmetallmessflächen
- Ableseile mattverchromt
- Gefühlsratsche

STANDARD ZUBEHÖR

- Verlängerungen nur bei Sets Schlüssel, Schraubendreher, Einstellringe
- Garantischein, Bedienungsanleitung, Kalibrierzertifikat
- Verpackung: Holzbox

FEATURES

- Graduation: 0.001mm / 0.005mm
- Measuring contact points are designed to allow measurements near to the bottom of blind holes
- Additional extensions can be added to increase the measuring depth
- Measuring surfaces are carbide (over 12mm range)
- Setting rings for origin point setting
- Ratchet stop

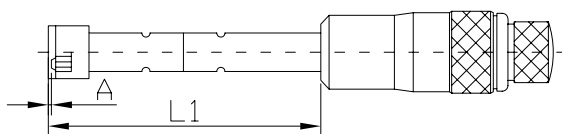
STANDARD ACCESSORIES

- Extension Rods only in sets Wrench, Screwdriver, Setting Rings
- Warranty card, Instruction manual, Calibration certificate
- Packaging: Wooden box

TECHNISCHE DATEN / SPECIFICATIONS

Messbereich	Ablesung	Genauigkeit	Einstellringe	L1	A	Verlängerungen	Best.-Nr.
Range	Graduation	Accuracy	Setting Rings	L1	A	Extension Rods	Code No.
6-8mm	0.001mm	±0.004mm	6	53.5mm	0.5mm		209-11-0
8-10mm	0.001mm	±0.004mm	8	53.5mm	0.5mm		209-12-0
10-12mm	0.001mm	±0.004mm	10	53.5mm	0.5mm		209-13-0
12-16mm	0.005mm	±0.004mm	16	80mm	0.5mm		209-24-0
16-20mm	0.005mm	±0.004mm	16	80mm	0.5mm		209-25-0
20-25mm	0.005mm	±0.004mm	25	90mm	0.5mm		209-26-0
25-30mm	0.005mm	±0.004mm	25	90mm	0.5mm		209-27-0
30-40mm	0.005mm	±0.004mm	40	97mm	0.5mm		209-28-0
40-50mm	0.005mm	±0.005mm	40	97mm	0.5mm		209-29-0
50-63mm	0.005mm	±0.005mm	62	114mm	0.5mm		209-30-0
62-75mm	0.005mm	±0.005mm	62	114mm	0.5mm		209-31-0
75-88mm	0.005mm	±0.005mm	87	114mm	0.5mm		209-32-0
87-100mm		±0.005mm	87	114mm	0.5mm		209-33-0
set							
6-12mm (3 pcs)	0.001mm	±0.004mm	6, 8, 10mm	53.5mm	0.5mm	100mm	209-63-8
12-20mm (2 pcs)	0.005mm	±0.004mm	16mm	80mm	0.5mm	150mm	209-64-8
20-50mm (4 pcs)	0.005mm	±0.004mm	25, 40mm	90mm	0.5mm	150mm	209-65-8
50-100mm (4 pcs)	0.005mm	±0.005mm	62, 87mm	114mm	0.5mm	150mm	209-66-8

Abmessung / Dimension



Innenmessschraube

Inside Micrometers 203 / 207 Series



AUSFÜHRUNG

- Auflösung:
digitale Modelle: .00005" / 0.001 mm
mechanische models: 0.01 mm
- für das Messen von speziellen Innenmerkmalen
- Hartmetallmessflächen
- matt verchromt
- 5-30 mm und 25-50 mm werden mit Einstellringen geliefert
- Ratsche
- digitales System gleich wie 105er Serie

STANDARD ZUBEHÖR

- LR44 Batterie (digitale Modelle), Haken-Schlüssel, Einstellringe
- Garantiekarte, Bedienungsanleitung, Kalibrierzertifikat
- Verpackung: Holzbox

FEATURES

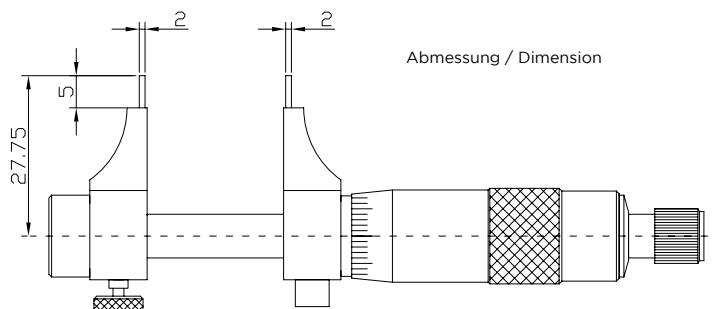
- Resolution:
Digital models: .00005" / 0.001mm
Mechanical models: 0.01mm
- Designed for the measurement of intricate internal characteristics
- cartide tipped measuring surfaces
- Satin chrome finished
- 5-30mm and 25-50mm range are supplied with setting rings
- Ratchet stop
- Digital System same as 105- Series

STANDARD ACCESSORIES

- LR44 Battery (Digital models), S-wrench, Setting rings
- Warranty card, Instruction manual, Calibration certificate
- Packaging: Wooden case

TECHNISCHE DATEN / SPECIFICATIONS

Messbereich	Ableseung	Genauigkeit	Einstellringe	Best.-Nr.
Range	Resolution	Accuracy	Setting Rings	Code No.
Digitale Modelle / Digital models				
5-30mm	0.001mm	±0.007mm	5mm	207-01-0
25-50mm	0.001mm	±0.008mm	25mm	207-02-0
50-75mm	0.001mm	±0.009mm	-	207-03-0
75-100mm	0.001mm	±0.010mm	-	207-04-0
Mechanische Modelle / Mechanical models				
5-30mm	0.01mm	±0.007mm	5mm	203-01-0
25-50mm	0.01mm	±0.008mm	25mm	203-02-0
50-75mm	0.01mm	±0.009mm	-	203-03-0
75-100mm	0.01mm	±0.010mm	-	203-04-0



Innenfeinmessgeräte

Dial Bore Gauges

483 / 484 Series



6-10mm
Fester Einsatz
Fixed Anvil



10-18mm
Platten-Guide
Plate Guide



18-35mm
Kanister Führung
Canister Anvil



Over 35mm
Führungsrad
Wheel Guide



484-22-0

AUSFÜHRUNG

- 6-10 mm Bereich ist mit festen Einsätzen
- 10-18 mm mit Flachführung und festen Einsätzen
- 18-35 mm mit Kanister Führung und festen Einsätzen
- über 35 mm mit Führungsrad und Einsteckeinsätzen

STANDARD ZUBEHÖR

- Garantieschein, Bedienungsanleitung, Kalibrierzertifikat
- Verpackung: Holzbox

FEATURES

- 6-10mm range is with fixed anvils
- 10-18mm range is with plate guide and fixed anvils
- 18-35mm range is with canister and fixed anvils
- Over 35mm range is with wheel guide and inserting anvils

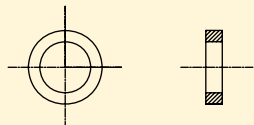
STANDARD ACCESSORIES

- Warranty card, Instruction manual, Calibration certificate
- Packaging: Wooden case

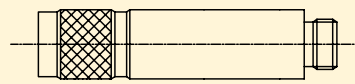
TECHNISCHE DATEN / SPECIFICATIONS

Messbereich	Ableseung	Messweg	Einsätze	Scheiben	Verlängerungen	Messtiefe	Best.-Nr.
Range	Graduation	Dial Travel	Anvils	Spacers	Sub-anvils	Probe Depth	Code No.
6-10mm	0.001mm	1mm	9	-	-	40mm	483-11-0
10-18mm	0.001mm	1mm	9	1	-	100mm	483-12-0
18-35mm	0.001mm	1mm	9	1	-	150mm	483-21-0
35-50mm	0.001mm	1mm	4	4	-	150mm	483-22-0
50-160mm	0.001mm	1mm	12	4	1	150mm	483-31-0
160-250mm	0.001mm	1mm	5	5	1	250mm	483-32-0
18-35mm	0.01mm	3mm	9	2	-	150mm	484-21-0
35-50mm	0.01mm	3mm	4	4	-	150mm	484-22-0
50-160mm	0.01mm	3mm	12	4	1	150mm	484-31-0
160-250mm	0.01mm	3mm	5	5	1	250mm	484-32-0
Set							
Messbereich	Ableseung	Messbereich	Messuhren		Best.-Nr.		
Range	Graduation	Individual Range	Indicator		Code No.		
18-160mm	0.01mm	18-35mm/35-50mm/50-160mm	402-03-2 3mmx0.01mm		484-63-8		
18-160mm	0.001mm	18-35mm/35-50mm/50-160mm	402-01-2 1mmx0.001mm		483-63-8		

Zubehör / Accessories

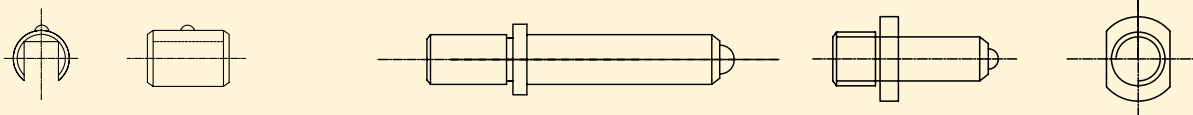


Unterlegscheiben / Washers



Sub-Ambosse / Sub-Anvils

Messbereich	Menge	Unterlegscheiben Washers (mm)					Menge	Sub-Ambosse Sub-Anvils (mm)	
Range	Qty.	#1	#2	#3	#4	#5	Qty.	#1	#2
6-10mm									
10-18mm	1	0.5							
18-35mm	2	0.5	1						
35-50mm	4	0.5	1	2	3				
50-160mm	4	0.5	1	2	3		1	55	
160-250mm	5	0.5	1	2	3	6	1	50	



Einsätze / Anvils

Messbereich	Menge	Einsätze / Anvils (mm)											
Range	Qty.	#1	#2	#3	#4	#5	#6	#7	#8	#9	#10	#11	#12
6-10mm	9	6	6.5	7	7.5	8	8.5	9	9.5	10			
10-18mm	9	10	11	12	13	14	15	16	17	18			
18-35mm	9	18	20	22	24	26	28	30	32	34			
35-50mm	4	35	40	45	50								
50-160mm	12	50	55	60	65	70	75	80	85	90	95	100	105
160-250mm	5	160	170	180	190	200							

Einstellgerät für Innenmessgeräte

Bore Gauge Zero Checker

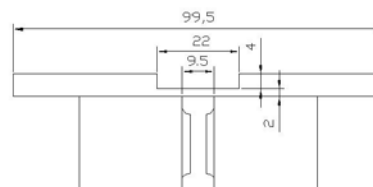
483 Series

AUSFÜHRUNG

- Dieses Gerät ermöglicht die Einstellung von Innenmessgeräten
- hohe Genauigkeit und gleichbleibende Präzision
- auswechselbare Messbacken zum Nullen verschiedener Innenmessgeräte

FEATURES

- The Bore Gauge Zero Checker allows easy set up of dial bore gauges
- High Accuracy and stable performance
- Interchangeable Supporting Blocks is for zero setting for various bore gauges



TECHNISCHE DATEN / SPECIFICATIONS

Messbereich / Range	Best.-Nr. / Code No.
18mm - 400mm / .7" - 16"	483-00-2

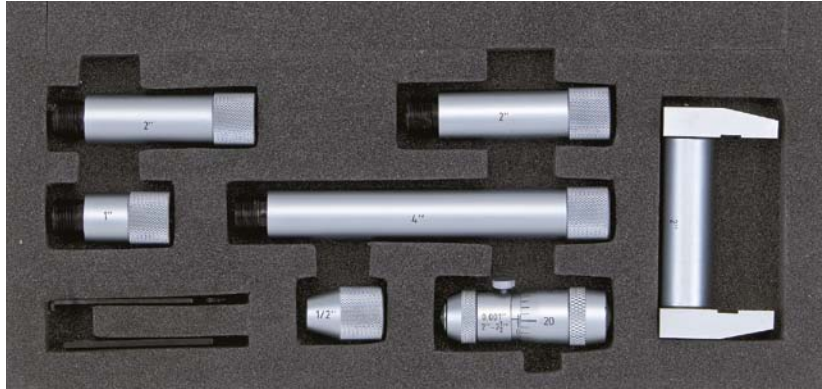




Innenmessschrauben in zusammensetzbarer Ausführung

Tubular Inside Micrometers

240 Series



AUSFÜHRUNG

- Skalenteilung: 0.01 mm
- Durch das Zusammensetzen der Messschraube mit den Verlängerungen wird ein großer Messbereich abgedeckt.
- Hartmetall Messflächen
- Durchmesser der Verlängerungen 15.5 mm
- Genauigkeit: $3+n+(L/50)\mu\text{m}$
(n=Anzahl der Verlängerungen, L= maximale Länge mm)

STANDARD ZUBEHÖR

- Hakenschlüssel, Einstellmass
- Verlängerungen, Einbaumessschraube
- Garantieschein, Bedienungsanleitung, Kalibrierzertifikat

FEATURES

- Graduation: .001" / 0.01mm
- Offers a wide range of ID measurements by combining extension rods with the micrometer head
- Supplied with a standard caliper gauge for zero setting
- The combining of extension rods provides a wide measuring range
- Carbide measuring faces
- Diameter of extension rods: $\varnothing 15.5\text{mm}$
- Accuracy: $3+n+(L/50)\mu\text{m}$
(n= number of rod, L=maximum measuring length mm)

STANDARD ACCESSORIES

- S-wrench, Standard caliper gauge, Extension rods, Micrometer Head
- Warranty card, Instruction manual, Calibration certificate

TECHNISCHE DATEN / SPECIFICATIONS

Messbereich / Range	Verlängerungen / Extension Rods	Bemerkung / Note	Best.Nr.: / Code No.
50-1000mm	13, 25, 50, 100 (2 pcs), 150, 200, 300mm	beinhaltet 13mm , 0.01mm Messschraube Includes 13mm, 0.01mm Mic. Head	240-02-0
50-63mm	-	Messschraube 13 mm micrometer head 13mm	169-55-0